



PROFILE

PAPATHANASIS Ltd. is a privately owned company operating in design and manufacture of heavy construction, especially for offshore companies. Established in 1980 by Athanasios Papathanasis and since has developed with continuous investments in equipment and human resources.

The expertise and experience of over 30 years in the field of marine industry in conjunction with the commitment to safety and quality, making the company a reliable partner for its customers.

FACILITIES

The company facilities, with a total area of 25.000 m², located in the area Glifa Chalkida and consist of two buildings with the surroundings. In 1980 opened the first building and in 2013 opened the second modern industrial building with length 54m, width 32m and height 18m.

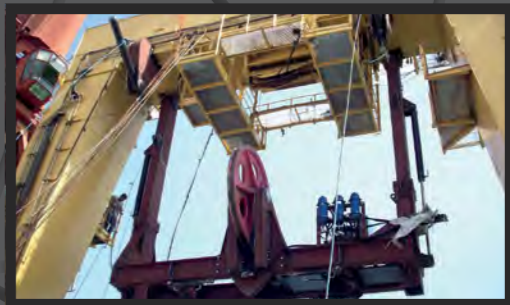


PROJECTS

CUSTOM MACHINES AND STEEL CONSTRUCTIONS



Cable Tensioner 30ton



Lanch and Recover System 35ton



Turn Table 1500ton



Hydraulic winch for trawler boat (15ton)



Turn Table 4500ton



Superstructures of cable layer vessel

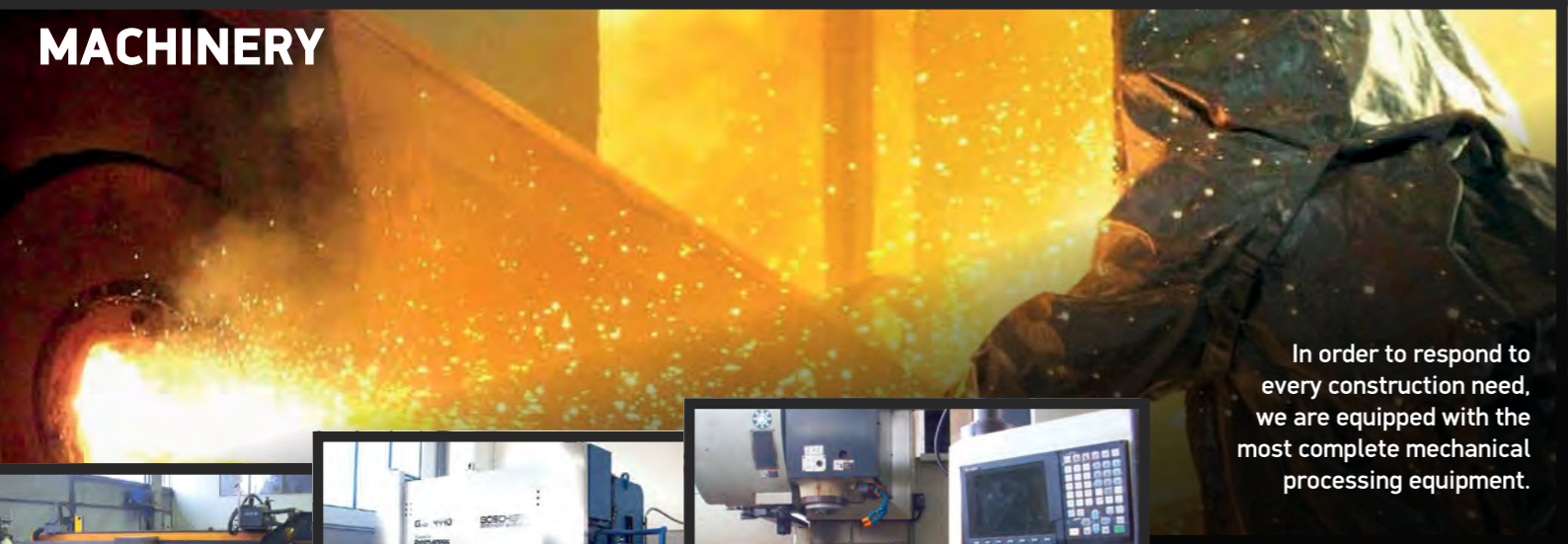


Helical cableway



Pelasgia Tolls

MACHINERY

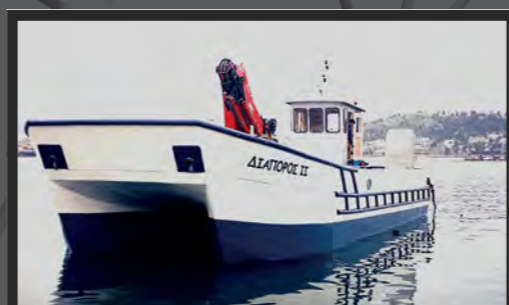


In order to respond to every construction need, we are equipped with the most complete mechanical processing equipment.



- Lathes with diameter processing up to 6m and length processing up to 6,5m
- Mills
- Radial
- Boring
- CNC Lathes
- Hydraulic Bending Machine 440tons
- Machining Center
- Plasma and Oxygen Cutting machine
- Naval presses up to 750 ton
- Rolls-Configurator
- Bending Cylinders
- Cranes with lifting weight capacity up to 120 ton and lifting height 12m

MARINE CONSTRUCTIONS



Catamaran 18m



Towboat 18m



Constructing the hull of the towboat



Construction and installation of rudders



PAPATHANASIS

MACHINE WORKSHOP - MARINE CONSTRUCTION

Our mission at PAPATHANASIS Ltd is to provide innovative constructions at the highest level of quality and safety.

+30 22210 20630

+30 22210 87047

